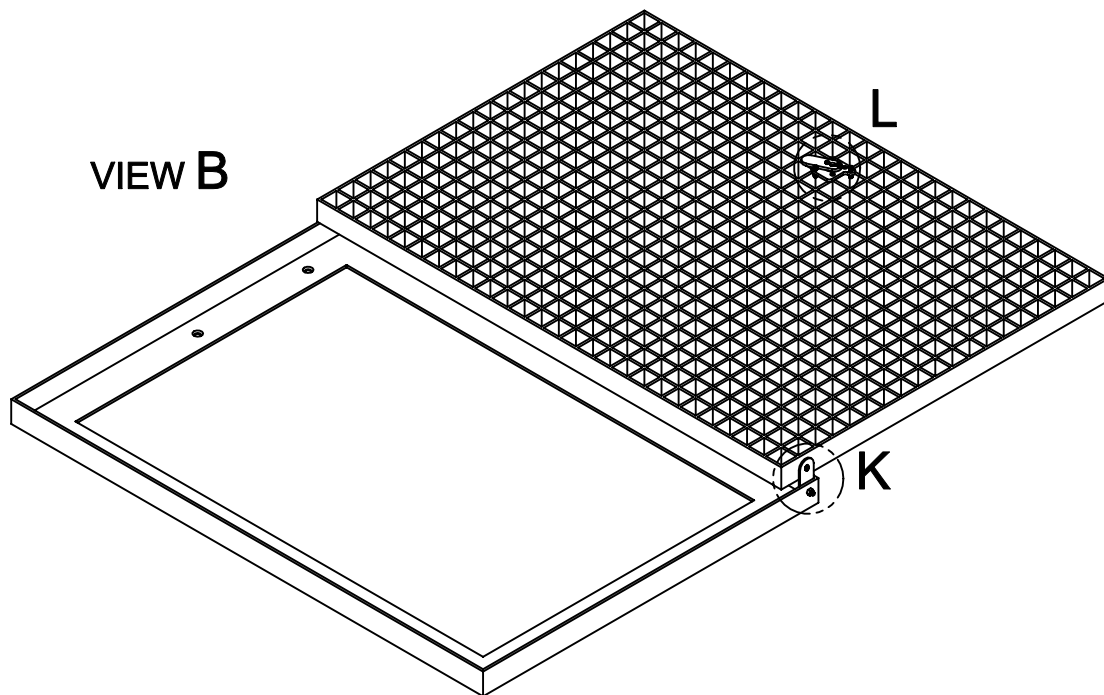
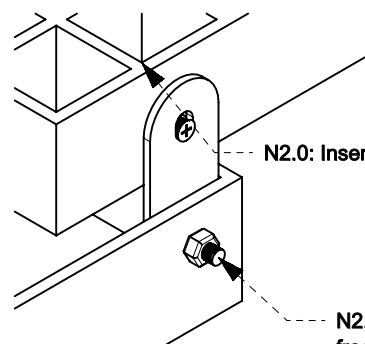


VIEW B



Product Notes

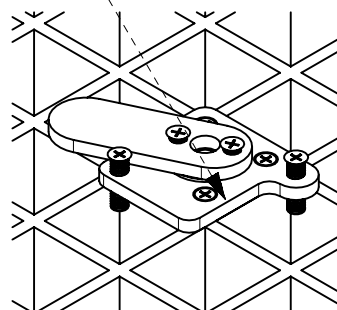
1. FRP Ecolites are load rated to Class B of AS3996 - 2006 (see attachment A).
2. FRP Ecolites achieve an R13 Oil-Wet Ramp Slip Resistance, as defined in AS/NZS 4586 - 2004 (see attachment A).
3. FRP Ecolite inserts are hinged, with $>180^\circ$ freedom of rotation.
4. The hinging mechanism allows the insert to sit on the ground behind the frame, giving full, unobstructed access to the pit.
5. The hinging mechanism, in combination with the lock, prevents the insert from moving in the event that the pit floods.
6. Total product weight, including frame, is $41.0 \text{ kg} \pm 0.2 \text{ kg}$.
7. Tested lifting weight of insert, once installed, is $14.8 \text{ kg} \pm 0.2 \text{ kg}$ (see attachment A).

GREEN
RAL 6021GREY
RAL 7035COLOURS AVAILABLE
*Other colours available upon request.

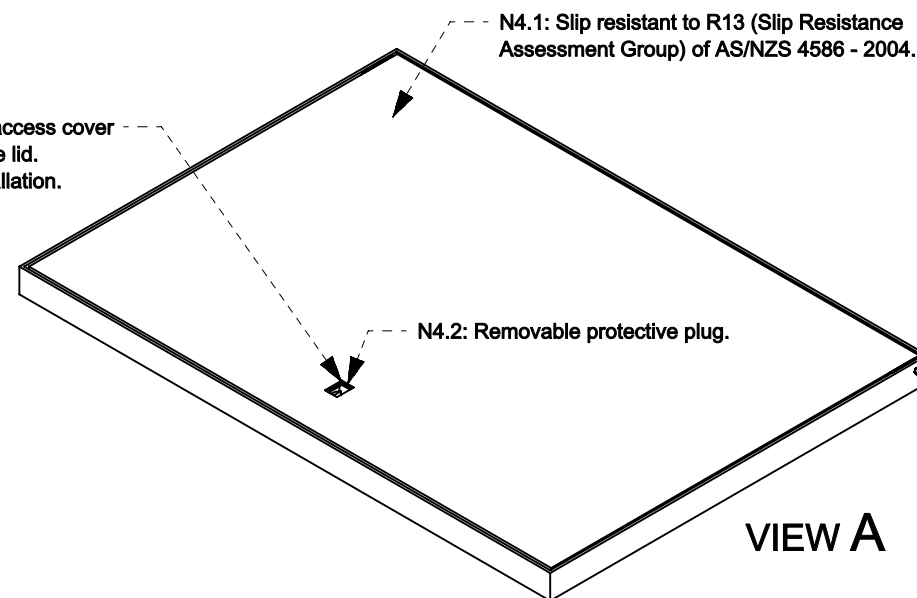
DETAIL K

N2.0: Insert has $>180^\circ$ freedom of rotation.N2.1: Hinge has 90° freedom of rotation.

N3.0: Stainless Steel 304 locking plate.



DETAIL L

N4.0: Standard, existing gatic/access cover lifters can be used to unlock the lid.
15.1kg maximum lift, after installation.

N4.1: Slip resistant to R13 (Slip Resistance Assessment Group) of AS/NZS 4586 - 2004.

N4.2: Removable protective plug.

VIEW A

ROAD SAFETY GRATING
13 HEALEY RD
DANDENONG SOUTH, VIC 3175PH: (03) 9238 5888
FAX: (03) 9238 5800
EMAIL: sales@grating.com.au
WEB: www.grating.com.au

Attachments

a	tr_frp-green-9060s
b	
c	
d	
e	
f	
g	

Disclaimer

Drawings are provided in good faith and for use by the intended recipient only. Drawings remain the property of Straighmark Nominees Pty Ltd T/A Road Safety Grating (R&S). If this drawing has been received in error, or you are not the intended recipient, please delete it immediately and notify Road Safety Grating.

Drawings are not to be transferred to a third party without written consent from Road Safety Grating. Road Safety Grating accepts no liability for misuse of, or reliance on, this drawing. If in doubt about any details on the drawing, please contact Road Safety Grating.

Sheet Information

No.	Description
1	FRP Cover & Frame Overview
2	FRP Cover & Frame Details
3	
4	
5	
6	

Sheet No.

1 of 2

Scale

AS NOTED, ONLY VALID
WHEN PRINTED ON A4

Part List

QTY	Part File Name	Part Weight (kg)	Sheets
1	frp-grey-9060j.prt	41.0 +/- 2.0	1, 2

Title

FRP Ecolite Junction Pit Cover:
900x600mm P/S

Subtitle

Class B, Grey

Class Rating (AS3996 - 2006)

B

Drawing No.

ps_frp-grey-9060j

Version No.

Previous Versions

Designed

Drawn

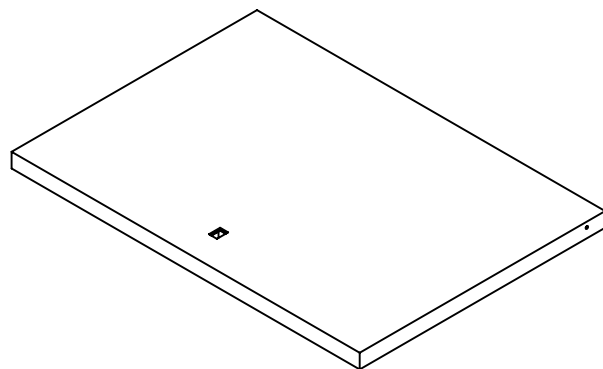
Date

Date

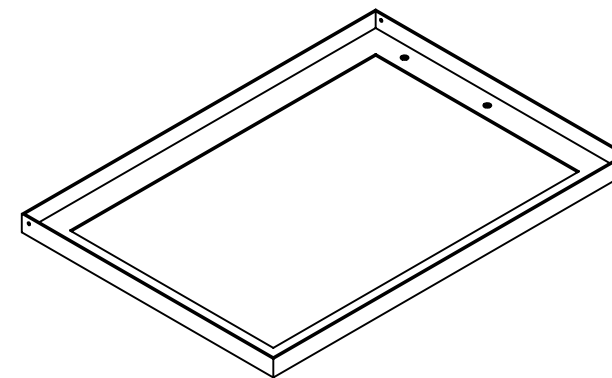
Date

Date

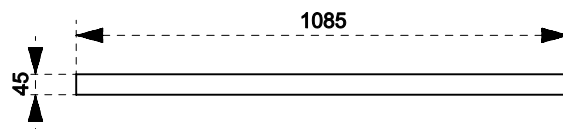
VIEW F



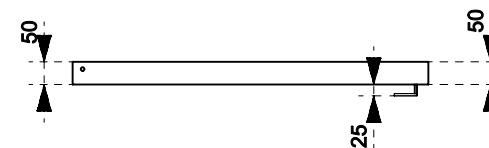
VIEW G



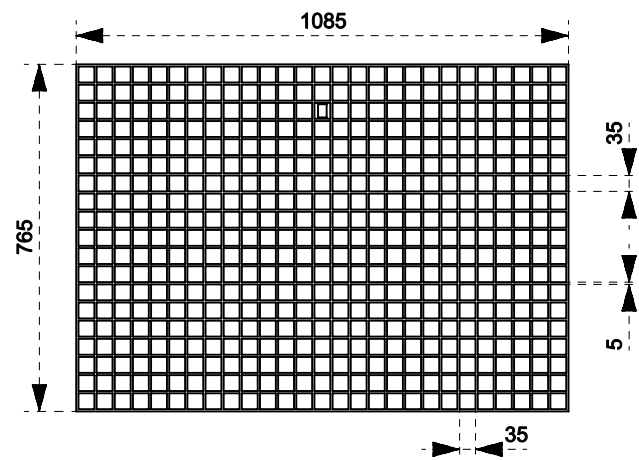
VIEW E



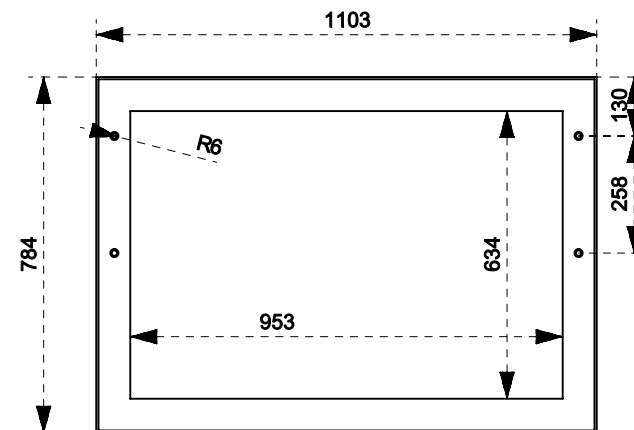
VIEW H



VIEW D



VIEW J



ROAD SAFETY GRATING
13 HEALEY RD
DANDENONG SOUTH, VIC 3175

PH: (03) 9238 5888
FAX: (03) 9238 5800
EMAIL: sales@grating.com.au
WEB: www.grating.com.au

Attachments

a	tr_frp-green-9060s
b	
c	
d	
e	
f	
g	

Disclaimer

Drawings are provided in good faith and for use by the intended recipient only. Drawings remain the property of Straightmark Nominees Pty Ltd T/A Road Safety Grating (R&S). If this drawing has been received in error, or you are not the intended recipient, please delete it immediately and notify Road Safety Grating.

Drawings are not to be transferred to a third party without written consent from Road Safety Grating. Road Safety Grating accepts no liability for misuse of, or reliance on, this drawing. If in doubt about any details on the drawing, please contact Road Safety Grating.

Sheet Information

No.	Description
1	FRP Cover & Frame Overview
2	FRP Cover & Frame Details
3	
4	
5	
6	

Sheet No.

2 of 2

Scale

AS NOTED, ONLY VALID
WHEN PRINTED ON A4

Parts List

QTY	Part File Name	Part Weight (kg)	Sheets
1	frp-grey-9060j.prt	41.0 +/- 2.0	1, 2

Title

FRP Ecolite Junction Pit Cover:
900x600mm P/S

Subtitle

Class B, Grey

Class Rating (AS3996 - 2006) B

Product Code frp-grey-9060j

Drawing No. ps_frp-grey-9060j

Primary Material FRP

Version No. 1.0

Previous Versions Nil

Designed KH

Drawn TH

Approved SH

Date 01/02/2012

Date 31/05/2012

Date 31/05/2012